

NZX 25001



EN



OPTIMOIL

Versatile emptying vacuum

Versatile industrial emptying vacuum, designed to empty machine-tools tanks and for daily maintenance operations.

TECHNOLOGY
HV®

TECHNOLOGY
TURBO®

FILTRATION
FINE

OPTIMOIL

OPTIMOIL is the combination of a powerful vacuum and high air flow in a single device.

The emptying of machine tool pans results in non-linear suction conditions. The suction of the liquid requires a high vacuum, but once the liquid has been emptied, the lubricated chips at the bottom of the tank require a high air flow to be drawn into the suction pipe.

The TURBO® technology on the OPTIMOIL 103M TC, 203M TC and 209 allows the unit to automatically change its flow/pressure configuration to suit the suction conditions.

A stainless steel version of the OPTIMOIL exists for non-foaming detergents, and a HV version for high volumes transfer, ideal for the draining of washing machines.



103M TC

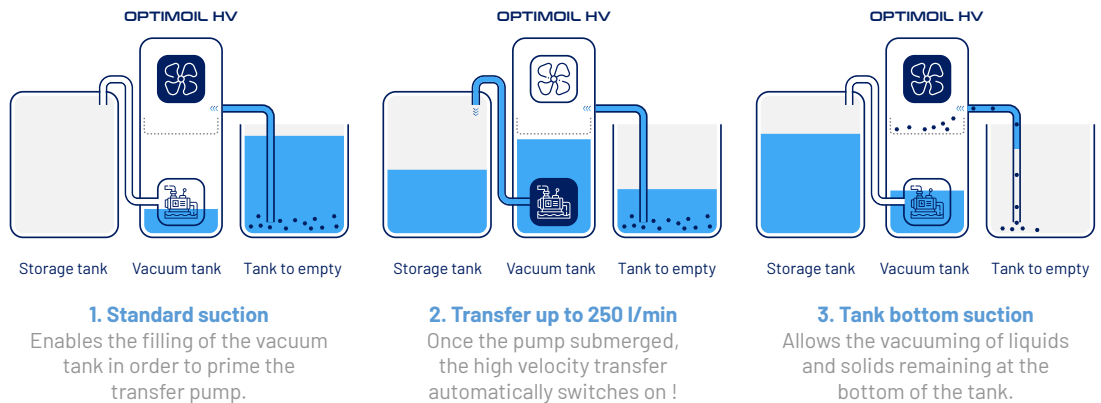
209 TURBO

TECHNOLOGY HV®

This patented SIEBEC SOFRAPER exclusivity allows ultra-fast transfer of liquids while guaranteeing complete cleanup of tanks, without any residues liquids nor solids.

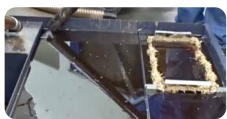


WATCH THE VIDEO



TECHNOLOGY TURBO®

This patented auto-adaptive multi motors technology is unique on the market. It enables the device to detect the suction context and automatically switch its motor settings to favor powerful vacuum (serial motors) or high flow rate (parallel motors). Thus, it works just as well on liquids as solids!



• **Vacuum (x2)**
Liquids vacuuming (charged fluids, oils, sludge...)



• **Flow rate (x3)**
Solids vacuuming (lubricated chips, dust...)



WATCH THE VIDEO



FILTRATION FINE



The fine filtration (20 or 5 µm) integrated upstream the discharge port enables the direct reuse of the fluid into the process. Significant time & money savings!

The L-TECH™ cartridge has a very high filtration area (5 m²) and is washable and reusable.



DETAILS



A. Liquids / solids separation

15l stainless steel basket for 2000 µm prefiltration.



B. Simplified cleaning and safety

Gravity draining coupled to a 3 tilted wall bottom. 3" lockable valve for quick emptying and avoid accidental spills.



C. Handling

Grip bar and polyurethane swivel castors in the front and large diameter castors in the back.



D. Suction & discharge

Possibility to vacuum and discharge the liquid simultaneously.



E. Cleaning & ergonomics

The accessory holder on top of the drip tray and the polyurethane casters guarantee a clean workshop floor.



F. Fine filtration

The double bypass valve at the tank outlet allow the discharge of the fluid either directly or through the filter (5 or 20 µm)

OPTIONS

1. Deposito di fanghi (30 litri)

Raccoglie e separa fanghi e trucioli. Include 3m di tubo flessibile.

4. Filtrazione fine

Filtrazione fine sulla mandata, con cartuccia da 5 o 20µm.

7. HP effect lance

For easy cleaning of tanks.

2. Livello di pressione

Controllo visivo della quantità di liquido presente nel serbatoio.

5. Stainless steel tank

Ideal for corrosive fluids and non-foaming detergents.

8. Removable pistol handle

For faster and easier discharge.

3. Sacco di pre-filtrazione

Per portare la pre-filtrazione da 2000µm a 200µm

6. Galleggiante per spegnimento automatico

Arresta il motore per la massima sicurezza insieme alla valvola galleggiante

9. GRV/IBC/ 1000L kit

Connect your OPTIMOIL to a high capacity container.



SPECIFICATIONS

OPTIMOIL is available in version 100 and 200 liters with TURBO[®] and HV[®] technologies.

3M TC versions offer an exceptional suction versatility with 3 1.1 kW single-phase motors. The single-phase motorization is ideal for frequent start/stop.

Other versions, with three-phase motorization work great for

continuous intensive applications.

The 209 TURBO version is the most powerful of the range with a motor power of 9.5 kW !



103M TC

203M TC
(203M TC HV)¹

104

204

205
(205 HV)¹

209
(209 HV)¹

	103M TC	203M TC (203M TC HV) ¹	104	204	205 (205 HV) ¹	209 (209 HV) ¹
Capacity (liters)	90	170	90	170	170	170
Capacity with simultaneous discharge	Unlimited	Unlimited	Unlimited	Unlimited	Unlimited	Unlimited
TURBO[®] technology	(3x 1,1 kW)	(3x 1,1 kW)	No	No	No	(5,5 + 4 kW)
HV[®] technology	No	Yes	No	No	Yes	Yes
Automatic HV[®] mode	No	Optional	No	No	Optional	Optional
304L stainless steel version	No	Optional	No	Optional	Optional	Optional
Simultaneous suction & discharge	Yes	Yes	Yes	Yes	Yes	Yes
Power supply	230V Single-phase	230V Single-phase	400V Three-phase	400V Three-phase	400V Three-phase	400V Three-phase
Power	3,3	3,3	4	4	5,5	9,5
Accessory holder on drip tray	Yes	Yes	Yes	Yes	Yes	Yes
Total gravity draining	Yes	Yes	Yes	Yes	Yes	Yes
2000 µm prefiltration basket	Yes	Yes	Yes	Yes	Yes	Yes
Fine filtration [outlet] (5 µm max)	Yes	Yes	Yes	Yes	Yes	Yes
Max vacuum	3800	3800	2900	2900	2900	5000
Max air flow (m³/h)	480	480	370	370	520	750
Suction hose diameter	Ø50	Ø50	Ø50	Ø50	Ø50	Ø50
Dimensions (mm)	520 x 905 x 1380	620 x 910 x 1492	520 x 935 x 1488	620 x 940 x 1600	620 x 940 x 1770	620 x 940 x 1770
Weight [without options] (kg)	101	120	118	133	140	200

¹ Values for the HV versions are displayed in blue when different from the standard version.

RECOMMENDED ACCESSORY KIT - Ø50 MM

1. Semi-rigid PE-metal cane (90 cm)
2. Straight PE cane (90 cm)
3. Flat spout (120 mm width)
4. Flat beveled spout
5. Reinforced suction hose with knurled screwed sleeves (3 m)
6. Floor nozzle (optional)



SOFRAPER SAS

15 chemin des bois | 74100 Ville-la-Grand, France
contact@sofraper.com | +33 4 76 93 12 09 | www.sofraper.com

Foto e dati tecnici indicativi, non contrattuali

BR_SO_OPTIMOIL_EN
© SIEBEC SOFRAPER 06/2022