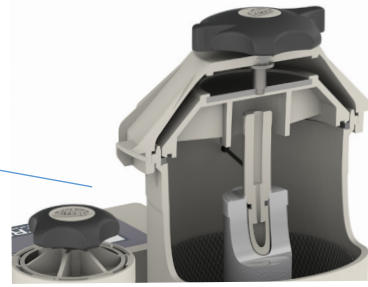


EN Data sheet



## Why ELECTRUM ?

The unit is designed for the electrolytic recovery of metals contained in concentrated or diluted solutions. It finds its principal applications in the recovery of precious metals (Au, Ag, Pd...), however it can also be used for the recovery of toxic metals in waste waters.

Its main application are for the recovery of :

- precious metal (Au, Ag, Pd...)
- the recovery of toxic metals (heavy) in used waters.

## Technical features

Materials	PP
Max temperature	60°C
Filtration	On patented Siebec cartridge
Pumps	M15 - M35
Flowrate	1,8 to 3 m <sup>3</sup> /h
Connections	Threaded - grooved nozzle



### Destruction of cyanide

Addition of 10 to 20 g/l of the ECN additives creates a continuous, destruction of cyanides while the electrolytic recuperation process.



### Efficient on all metals

Operating methods available for different materials such as Gold, Palladium, Silver and others in concentrated or rinse bath.



### High capability for recovery of metals

High pump capacity allowing a large number of turnover in a short scale of time.



### Quick return on investment

The more the recovery the more return on the investment you will have.



### Amount of metal recovered known by weight

Calculate and monitor your own material recuperation, data often important production.



### Easy to melt and refine

Recovered metals quickly back in process.



### Deposit trapped inside the cartridge

No more loss of metals going back into the solutions.



### Patented

Large manufacturing company and well organised customer services to help you on advices.

## Recuperation :

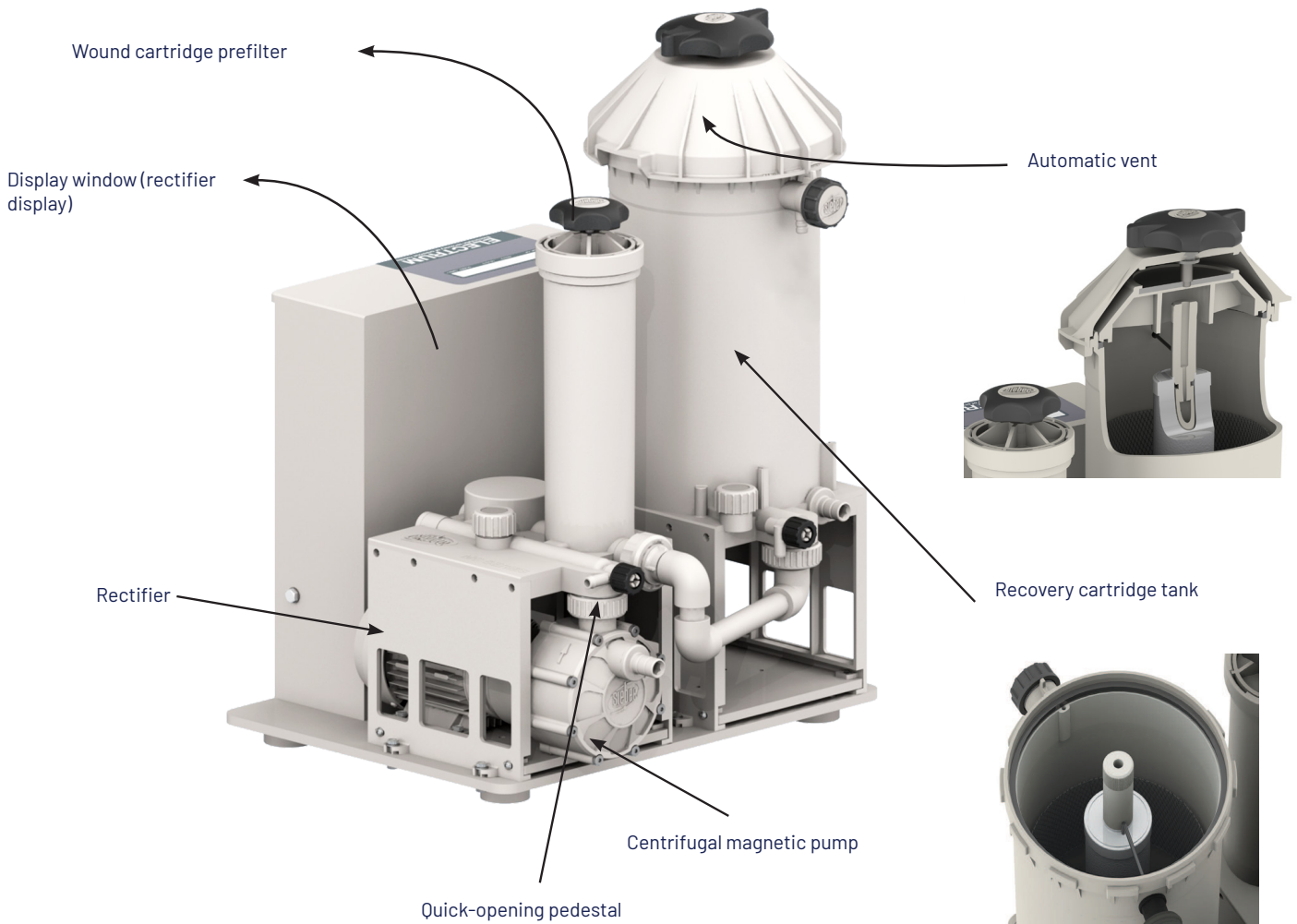
**of the Palladium in ionic solutions :** the Palladium is recovered by the use of the Pd special cartridges.

**of the Palladium in colloids :** addition of the EPd additive and the use of a special cartridge allow the recuperation of the Palladium in colloidal solutions.

**in Gold Strip :** the addition of 10 to 20 g/l of water additive make possible the gold recuperation in gold strip bath.



## Working principle



### Captive cartridge

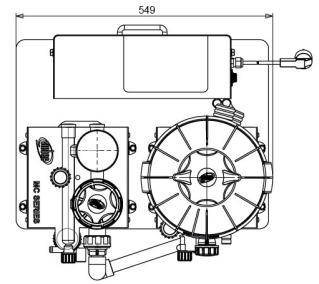
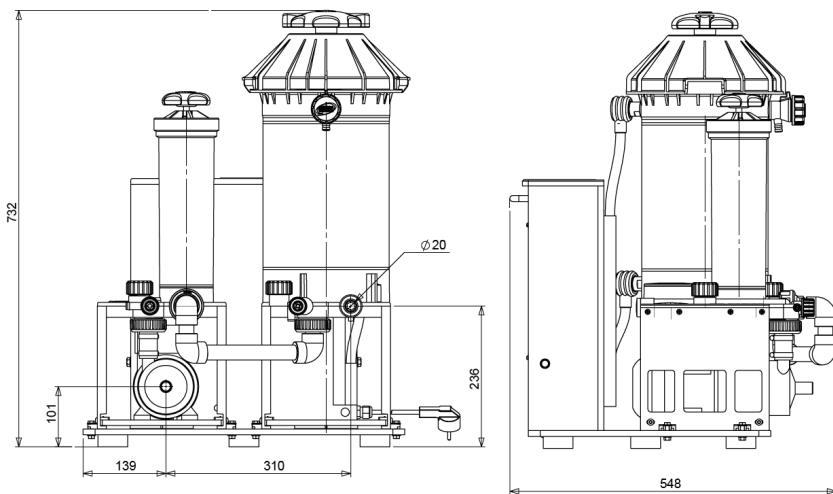
The Electrum® recovery cartridge (patented) is a porous and combustible container in which the metal extracted from the solution is deposited. The porosity of the walls has been calculated in order to let circulate the liquid but to keep metallic particles inside. When this operation of recovery is finished, the cartridge is rinsed, dried, weighted and sent for treatment where it is burnt. The metal is then melted and refined without any difficulty.

### Benefits

- The deposit is kept within the cartridge
- Avoid any loss of metal, even if the deposit is "burnt"
- Invisible deposit
- Possibility to know the weight of the deposit by simple weighing before and after
- Easy to melt and refine



### M15 dimensions



**Magnetic pump M15**  
~ 0.045 kW, ~ 1800 l/h

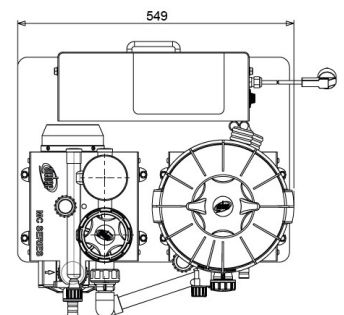
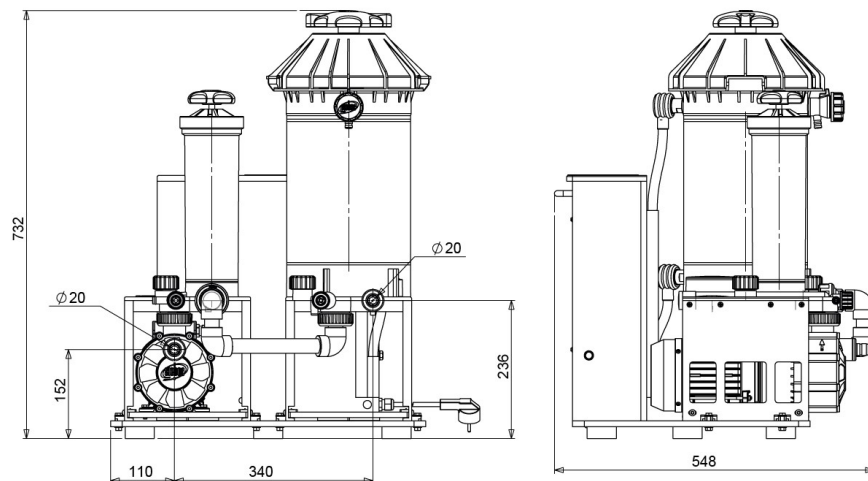
### Technical features

<b>Volume of liquid contained in the display</b>	nearly 10 liters
<b>Maximum temperature of use</b>	60°C
<b>Electrical input</b>	220 volts single-phase 50 Hz, Plugs: E.C certified
<b>Power consumption</b>	~ 330 VA (1,5 A)
<b>Rectifier</b>	15 Amperes, 10 volts, direct current, stabilized intensity or voltage
<b>EC Certified</b>	Protection against excess current by fuse and general circuit breaker

#### Identification ELECTRUM

SIRELEC 52799 - 2.5"  $\varnothing$  CAPTIVE cartridge  
4"

### M35 dimensions



**Self repriming magnetic pump M35**  
~ 0.18 kW, ~ 3000 l/h

### Technical features

<b>Volume of liquid contained in the display</b>	nearly 10 liters
<b>Maximum temperature of use</b>	60°C
<b>Electrical input</b>	220 volts single-phase 50 Hz, Plugs: E.C certified
<b>Power consumption</b>	~ 330 VA (1,5 A)
<b>Rectifier</b>	15 Amperes, 10 volts, direct current, stabilized intensity or voltage
<b>EC Certified</b>	Protection against excess current by fuse and general circuit breaker

#### Identification ELECTRUM

SIRELEC 52808 - 2.5"  $\varnothing$  CAPTIVE cartridge  
4"

